



Daylesford

Self-Drive Itinerary 3 Days / 2 Nights

Designed with a couple in mind, this itinerary takes you on a journey discovering Daylesford's many delights. From indulgent wellness experiences to culinary masterpieces, vibrant art galleries to stunning natural attractions, plus much more. We're only 90 minutes from Melbourne, yet a world away from the hustle and bustle of the city. Take the time to visit us... and slow down.

Hepburn
SHIRE COUNCIL

**Daylesford Regional
Visitor Information Centre**
98 Vincent St Daylesford
1800 454 891
Open 7 Days 10am — 4pm



How to get here

One of the best things about visiting Daylesford is its close proximity to Melbourne. The easiest way to arrive is by car. You can enter the region via two main freeways: Follow the National Highway (M8) towards Ballarat. Then take the C141 exit towards Daylesford, following the Ballan Daylesford Road. Alternatively, follow the Calder Freeway and take the Woodend exit, then follow the C137 to Daylesford. Allow 90-minutes travel time along both routes.

Daylesford

DAY ONE - FRIDAY

Relax and unwind

LUNCH

Sault Restaurant Daylesford

Set within a beautiful country house, one could easily be forgiven for thinking you were in rural France when dining at [Sault Restaurant](#). Taking its name from a French town famed for its lavender, Sault is set on 120 acres surrounded by the Wombat State Forest, home to an expansive kitchen garden, beehives and seasonal flower fields. Here the seasonal menus are designed to incorporate the freshest ingredients with the highest quality produce they can source, with a strong focus on Sault's own kitchen gardens, complimented by produce from regional organic farms.

Choose from the three, four or seven course seasonal menus (prices start from \$115pp).

Open hours: dinner from Wednesday through to Saturday from 5:30pm. Or lunch on Friday, Saturday and Sunday from 11:00am

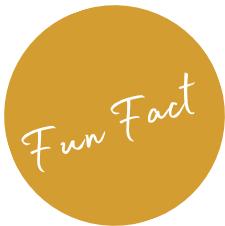


AFTERNOON

Sailors Falls, Mineral Springs, Lake House & Spa Treatment

Walk off your lunch with a stroll around nearby [Sailors Falls](#) (1-minute / 800 metre drive from Sault Restaurant). You can view the spectacular drop of the twin falls from the picnic area. Make sure you take some time to read the interpretive signage detailing the history and fascinating geology of the area. You can also taste some of the fresh mineral water the Daylesford region is famous for by pumping mineral water directly from the source at the pump located beside the picnic area. Entry is free.

Prepare to be wowed as you check-in to your accommodation at [Lake House](#) (5-minute / 5.3km drive from Sailors Falls). Recognised as one of Australia's most romantic hotels, Lake House is famous for its beautiful lakeside location, two-hatted destination restaurant, luxury accommodation, award-winning cellar and impeccable service.



Lake House has been owned and operated by the Wolf-Tasker family since 1984. It is a property full of love and soul, art and life; a property in which to indulge, relax and cocoon.

Relax and indulge at the award-winning [Spa at Lake House](#), nestled amongst the lush gardens of the Lake House. Surrounded by waterfall fed streams, this state-of-the-art space offers nine treatment areas over three levels.



Top Tip

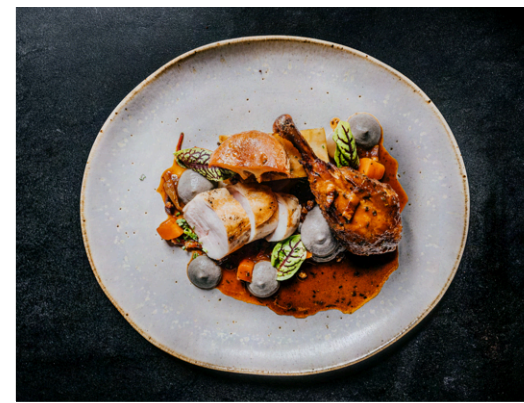
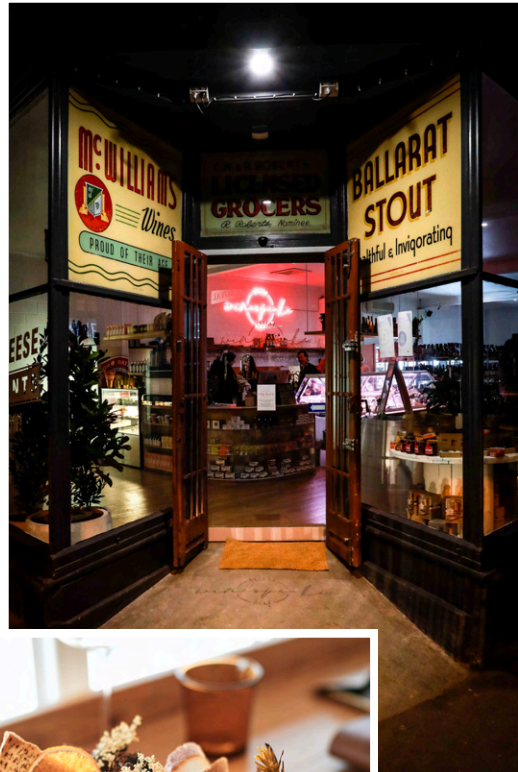
An excellent option for couples is the Mineral Soak & Massage Experience, which has been designed for the ultimate in relaxation for the mind and body. Soothing, rhythmic massage strokes ease tension, stimulate circulation of the lymphatic system. Complete your ritual with a soak in your own private tree top mineral water spa. This treatment goes for 90 minutes and costs from \$265 per person.

DINNER

Winespeake Cellar + Deli or Bistro Terroir

For a light dinner, pull up a stool at [Winespeake Cellar & Deli](#) (a 3-minute drive or 15-minute / 1km walk from Lake House). Order a cheese and charcuterie platter and a glass of local wine, or be adventurous and try their signature wine and cheese flight, including four glasses of wine, paired perfectly with four specially matched cheeses.

For a more substantial meal, pop up the road to [Bistro Terroir](#) — a neighbourhood French bistro. Here the menu changes with the seasons, drawing strongly from local producers. Enjoy dishes such as Rabbit Balantine or their famous Steak Frites.



Alternative Accommodation

Those seeking a self-contained or more secluded option can book a stay through one of the Daylesford's leading booking agents. [Daylesford Country Retreats](#), [The Houses Daylesford](#), [Discover Daylesford](#) and [Dayget](#) all offer a number of stunning properties. From cosy miners cottages surrounded by lush gardens to architect designed villas, there are plenty of choices.

DAY TWO - SATURDAY

*Be inspired by nature
feast on fresh produce.*

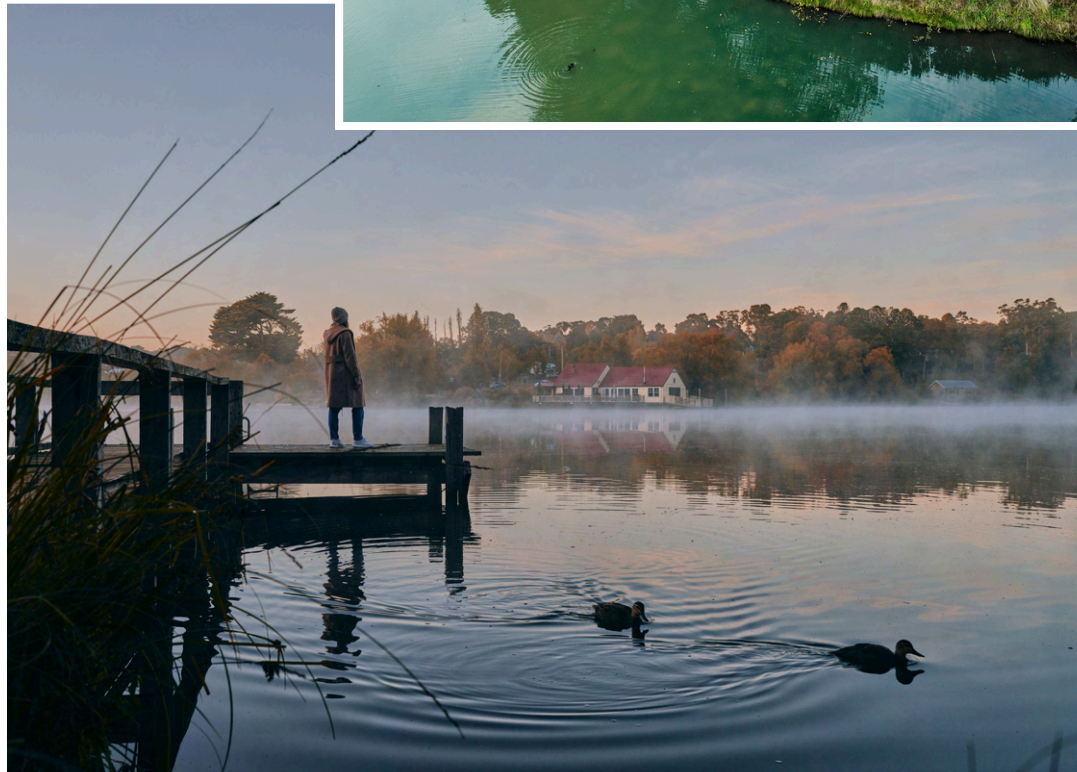
MORNING

Lake Daylesford, Wombat Hill Botanic Gardens
and The Convent Daylesford

Start your day with a stroll around the beautiful Lake Daylesford (located directly in front of Lake House). For the best experience, allow time to circumnavigate the whole lake (40-minutes / 2.8km). Enjoy a hearty country style breakfast buffet back at the Lake House after your early morning adventures (served from 8am-10am).

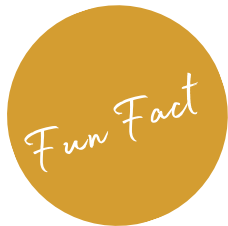


This man-made lake, which was created in 1927, was originally a site of gold diggings. Nowadays, it is one of Daylesford's most popular natural attractions.



MORNING (continued)

Drive to [Wombat Hill Botanic Gardens](#) (allow 4-minutes / 1.7km), which are perched high on the summit of an extinct volcano. The pinnacle of the gardens is Pioneer Memorial Tower, which soars high above the trees and offers superb views of the surrounding forest, and the town of Daylesford itself. Within the gardens, in a 1940s house, is [Wombat Hill House](#) café, where you can enjoy an expertly brewed coffee, paired with a freshly baked treat from Dairy Flat Lodge & Farm.

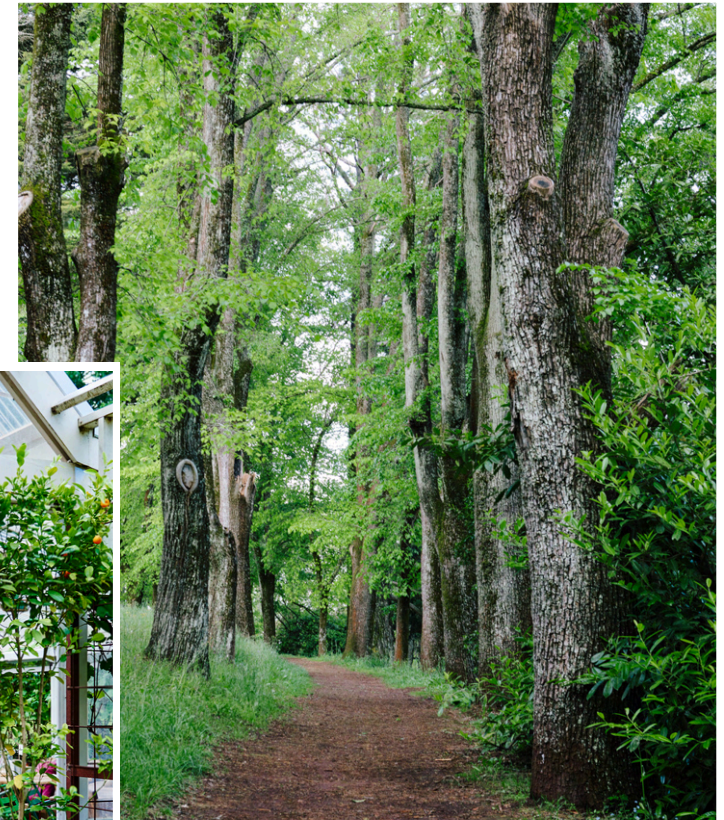


Covering almost 25 acres, Wombat Hill Botanic Garden are encircled by a carriage drive, running under an avenue of elms, which is part of the original 1880s design.

After your coffee, drive to [The Convent Daylesford](#) (allow 3-minutes / 1.3km). Perched on the slopes of Wombat Hill, this grand old building contains eight gallery spaces, picturesque gardens, a renowned café and retail space, along with a museum and chapel. The six acres of exquisite gardens have been compared to some of the most famous in Versailles and are reason alone for visiting. Gallery admission is \$10 for adults or \$8 for concession.



For just under a century the Presentation Sisters educated and shaped the lives of hundreds of women at The Convent building through the Holy Cross Boarding School. Today, The Convent showcases the works of local, national and international artists.



LUNCH

Lake House Restaurant

Treating yourself to lunch at the renowned, two chef-hatted restaurant at [Lake House](#) is one of life's true pleasures. Foodies from around the world flock to the restaurant to enjoy cutting edge, modern Australian cuisine, which has a strong focus on local and seasonal produce. Under the direction of Culinary Director Alla Wolf-Tasker AM, the kitchen work with great Australian produce including a raft of excellent small scale local suppliers and growers and their own Dairy Flat Farm. Dining at Lake House Restaurant cost \$210pp for a multi course a la carte menu. A meal at the restaurant is included as part of all accommodation packages.



DINNER

Kadota Restaurant

Keep your gourmet adventure going with a delicious dinner at [Kadota](#) (3-minute drive or 20-minute walk / 1.4km), where lovingly crafted Japanese flavours are carefully produced using seasonal local artisan ingredients. Omotenashi, meaning honest service and honest food, is at the heart of everything they do. Choose from the 6-course classic menu (\$120pp) or the 7-course luxury menu (from \$190pp). Bookings are essential.



Top Tip

After lunch, relax beside the infinity pool and enjoy an aperitif on the Lagoon Deck, overlooking Lake Daylesford. Or, in the cooler months, opt for a glass of red by the lakeside fire pit.

DAY THREE - SUNDAY

*More fine food, shopping
and exploring*

MORNING

Cliffy's Emporium, Daylesford Sunday Market and Vincent Street

Enjoy breakfast at one of Daylesford's most iconic locations, [Cliffy's Emporium](#) (4-minutes drive / 1.8km from Lake House). Local produce including cheese, meat, eggs, oil, honey and preserves star on the menu — think eggs with sides including roasted sumac tomatoes and marinated roast mushrooms.

After breakfast, spend some time perusing the [Daylesford Sunday Market](#), a short 150m stroll from Cliffy's. Home to over 100 stalls, here you can meet directly with the farmers and pick up some tasty fresh produce that the region is famed for. Choose from freshly baked bread to organic fruit and vegetables, preserves, cider, gin, whisky and more. You'll also find locally crafted goods, tools, flowers, plants, antiques, clothes and more. The Sunday market runs from 8am to 1pm every Sunday.

Meander back to [Vincent Street](#), the charming heart of Daylesford (10-minute walk or 1 minute drive / 1km). Here, art galleries and antique stores can be found sitting alongside designer boutiques and welcoming eateries. Peruse boutique stores such as [Harry & Me](#) and [Creswick Natural Fibres](#), pick up some locally grafted gin at [Hepburn Distillery](#) or find that one of a kind artwork at [Bromley & Co.](#)



Top Tip

Keep an eye out for the grand architecture of buildings such as the Daylesford Town Hall and the Post Office, which stand as legacies of the gold rush days.

LUNCH

Passing Clouds Winery

Just outside Daylesford is Passing Clouds Winery, allow 10 minutes for the 7.6km drive. Here, second generation winemaker Cameron Leith and his team produce cool climate wines including pinot noir and chardonnay. Taste their range at the welcoming cellar door, before moving on to the recently renovated dining room for a three-course shared La Famiglia lunch. The three-course fixed shared menu costs \$85pp.



AFTERNOON

Daylesford Cider, drive home

End your Daylesford adventure with a refreshing beverage at Daylesford Cider, allow 6-minutes for the 3,4km drive. Here the passionate owners produce a diverse range of craft cider, made using the heritage cider apples grown organically on the farm alongside other locally grown fruit. The English tavern themed cellar-door is surrounded by picturesque landscaped gardens, with views up to the original orchard, planted in 2003.



Arrive home feeling refreshed, rejuvenated and deliciously full after three days exploring Daylesford.

Start planning your trip now. Discover more at daylesfordmacedonlife.com.au.

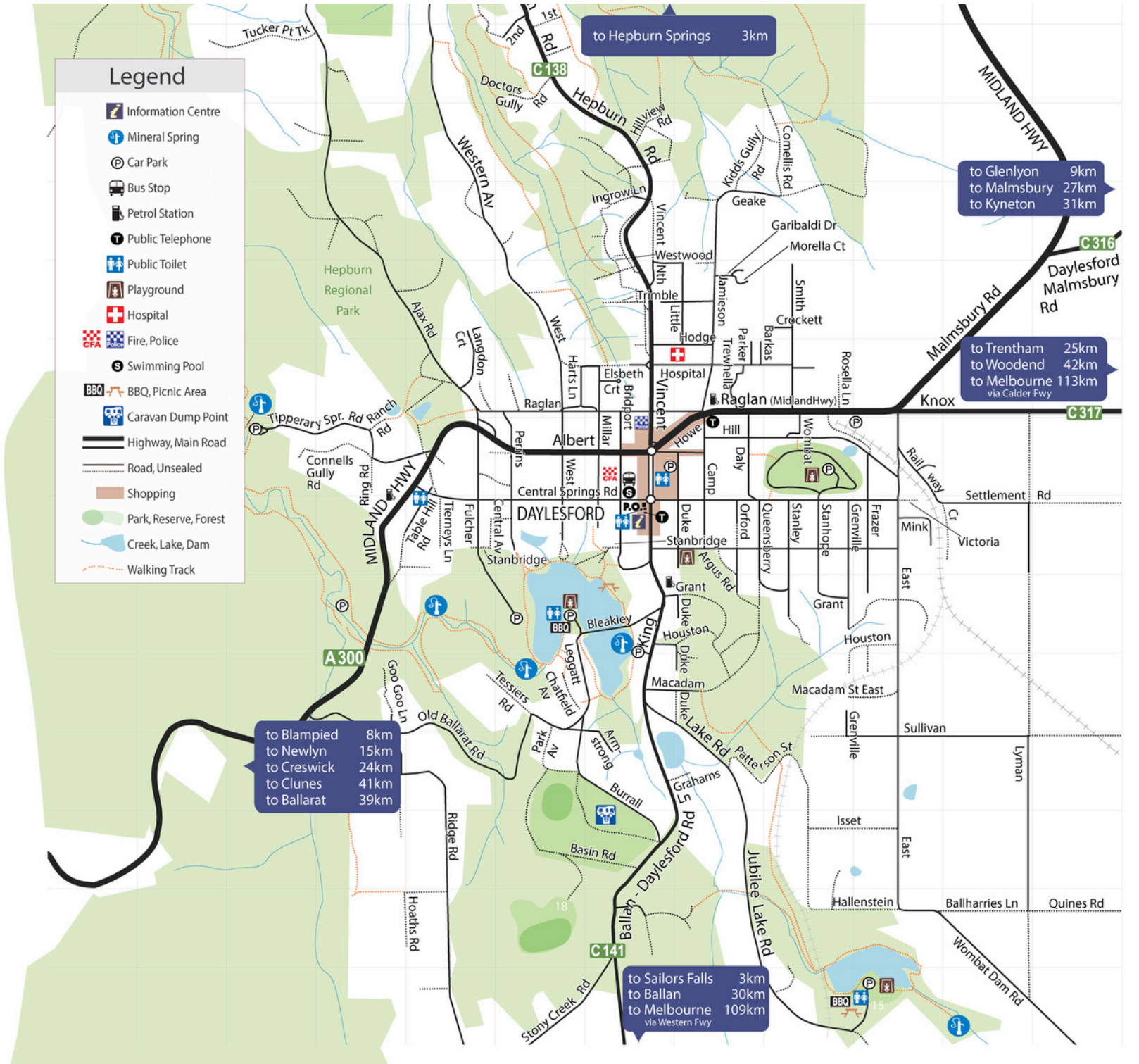


Top Tip

Tired driving is a significant risk on our roads. There are things you can do to stay safe and reduce the chances of crashing while tired, including taking regular breaks. We recommend stopping in Woodend for some fresh air and a wander down the historic main street, before continuing to Melbourne.

Daylesford

- ### Legend
- Information Centre
 - Mineral Spring
 - Car Park
 - Bus Stop
 - Petrol Station
 - Public Telephone
 - Public Toilet
 - Playground
 - Hospital
 - Fire, Police
 - Swimming Pool
 - BBQ, Picnic Area
 - Caravan Dump Point
 - Highway, Main Road
 - Road, Unsealed
 - Shopping
 - Park, Reserve, Forest
 - Creek, Lake, Dam
 - Walking Track



to Hepburn Springs 3km

to Glenlyon 9km
to Malmesbury 27km
to Kyneton 31km

to Trentham 25km
to Woodend 42km
to Melbourne 113km
via Calder Fwy

to Blampied 8km
to Newlyn 15km
to Creswick 24km
to Clunes 41km
to Ballarat 39km

to Sailors Falls 3km
to Ballan 30km
to Melbourne 109km
via Western Fwy